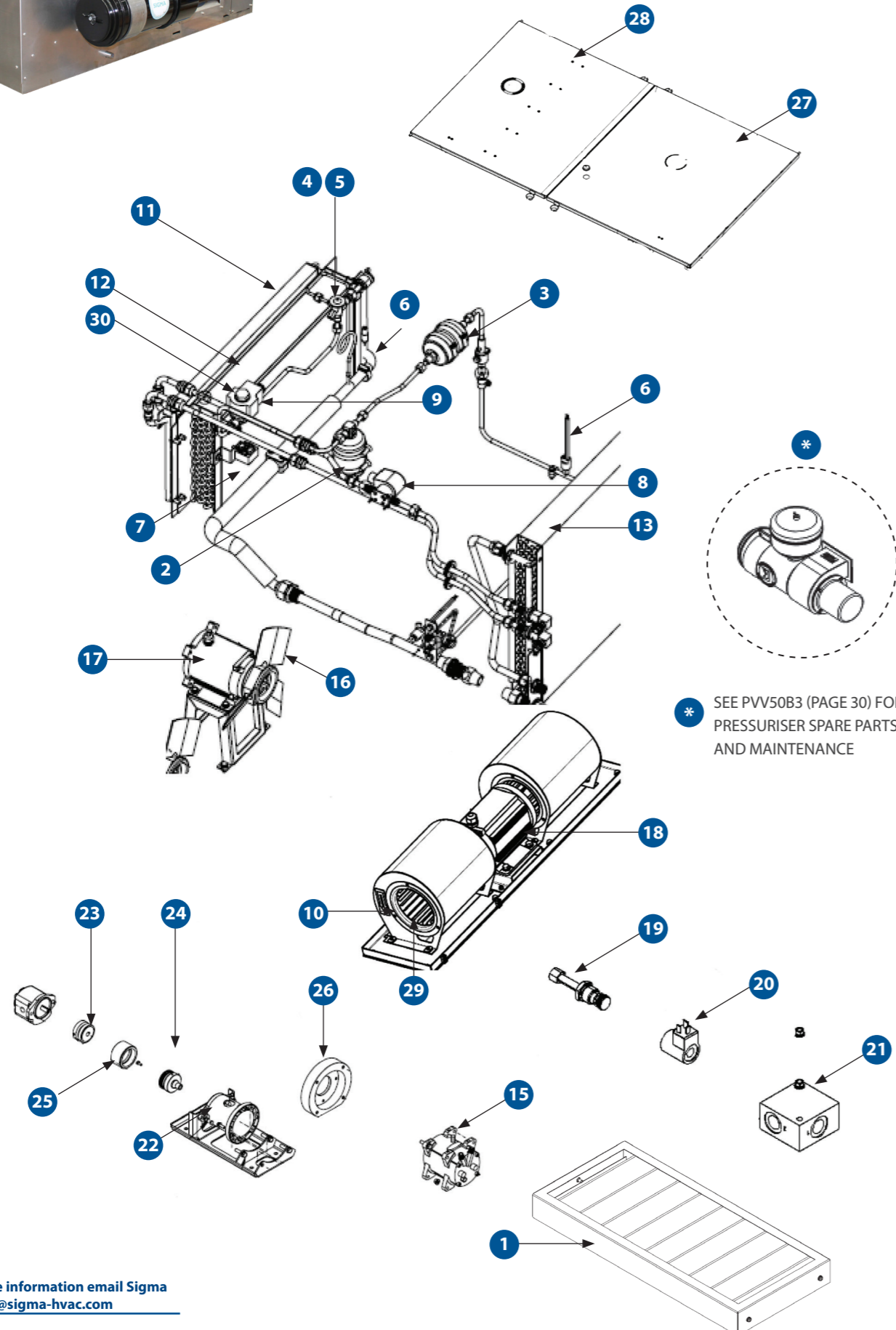




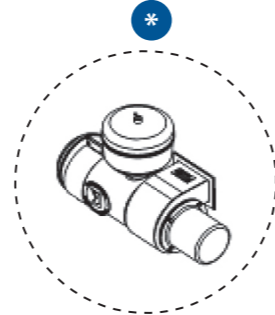
# TDR10 - REFRIGERATION

## TRUCK ROOFTOP HVAC UNIT

TDR10BX1 | TDR10BX2



\* SEE PVV50B3 (PAGE 30) FOR PRESSURISER SPARE PARTS AND MAINTENANCE



## SPARE PARTS

PART NO.	DESCRIPTION	QTY
1	AS3754056 S3754098 RETURN AIR FILTER ASSEMBLY RETURN AIR FILTER MEDIA	1 1
2	AU531411 RECEIVER DRIER 3/8" 24UNF 165MM HIGH	1
3	AU531138 DRIER 3/8" MF	1
4	AU521509 TX VALVE 2T 3/8" IN 1/2" OUT 1/4" EQ R134A	1
5	AU521508 TX ORIFICE 2T R22 #06	1
6	AU523655 HP SWITCH 1/4" FF 2415kPa	1
7	UE016 THERMOSTAT DEICE STUD	1
8	UE057 VALVE SOLENOID 1/4" BSP 24VDC WATER	1
9	AU522021 SOLENOID VALVE 3/8" SOLDER NC	1
10	AU410902 INLET RING 105MM	4
11	AU130036 HEATER COIL 570MM X 305MM X 33MM 2RW TDR10	1
12	AU120036 EVAPORATOR COIL 570MM X 305MM X 83MM 5RW TDR10BX1	1
13	AU110036 CONDENSER COIL 650MM X 533MM X 66MM 4RW TDR10	1
14	AU340000 MOTOR HYDRAULIC DRIVE 14CC	1
15	AU270019E COMPRESSOR VMO NO CLUTCH	1
16	AU420227 FAN AXIAL 300MM 3 BLADES RA	2
17	AU320032 MOTOR 0.15kW 71 FT 4P 24VDC S/S	2
18	AU320033 MOTOR 0.37kW 71 FT 4P 24VDC D/S	1
19	AU522000 SOLENOID VALVE CARTRIDGE SIZE 12 (BX2)	1
20	AU522001 SOLENOID VALVE COIL (BX2)	1
21	AU522003 SOLENOID VALVE BODY SIZE 12 3/4" BSPP (BX2)	1
22	AS509727 COMPRESSOR MOTOR HOUSING	1
23	AS509742 COUPLING MALE MOTOR	1
24	H0130377 COUPLING MALE-COMPRESSOR	1
25	AS509744 COUPLING FEMALE (BX2)	1

\* SEE FVV50B3 (PAGE 30) FOR PRESSURISER SPARE PARTS AND MAINTENANCE

SPARE PARTS LIST CONTINUED NEXT PAGE

131 For more information email Sigma  
mid.aus@sigma-hvac.com

## SPECIFICATIONS

	METRIC	IMPERIAL
Cooling Capacity	8.5 kW	29002 BTU
Heating Capacity	10.0 kW	34120 BTU
Fan Speeds	3	3
Air Flow	350 l/s	742 CFM
Fresh Air	30 l/s	64 CFM
Power Supply	24 V	24 V
Current Draw	33A	33A
Refrigerant	R134a	R134a
Maximum Ambient Temperature	54°C	129°F
Weight (nominal)	220.0 Kg	484.0 lbs
Technical Manual Reference	SM478-3754	SM478-3754
Dimension (L X W X H)	1484mm X 833mm X 650mm	58.4in X 32.8in X 25.6in

## MAINTENANCE

MONTHLY / 400 HOURS	
AS3754056	RETURN AIR FILTER ASSEMBLY
ANNUAL / 4,800 HOURS	
AU531411	RECEIVER DRIER 3/8" 24UNF165MM HIGH
AU531138	DRIER 3/8" MF
3 YEARS / 14,400 HOURS	
AU521509	TX VALVE 2T 3/8"IN 1/2"OUT 1/4"EQ R134A
AU521508	TX ORIFICE 2T R22 #06
AU523655	HP SWITCH 1/4" FF 2415kPa
AU523365	LP SWITCH 1/4" FF 205kPa
UE016	THERMOSTAT DEICE STUD
UE057	VALVE SOLENOID 1/4" BSP 24VDC WATER
AU522021	SOLENOID VALVE 3/8" SOLDER NC
AU862211	SEAL RUBBER

Please contact SIGMA for more information including details on an overhaul scope and interval. Maintenance periods and scope are dependent on application and site conditions, and are to be used as a guide.

## COMPANION ITEMS

PART NO.	DESCRIPTION
H0017489	Hydraulic Compressor
H0017493	Hydraulic Compressor
AU270314E	Engine Driven Compressor
AU270318E	Engine Driven Compressor
KIT375401	Installation Kits

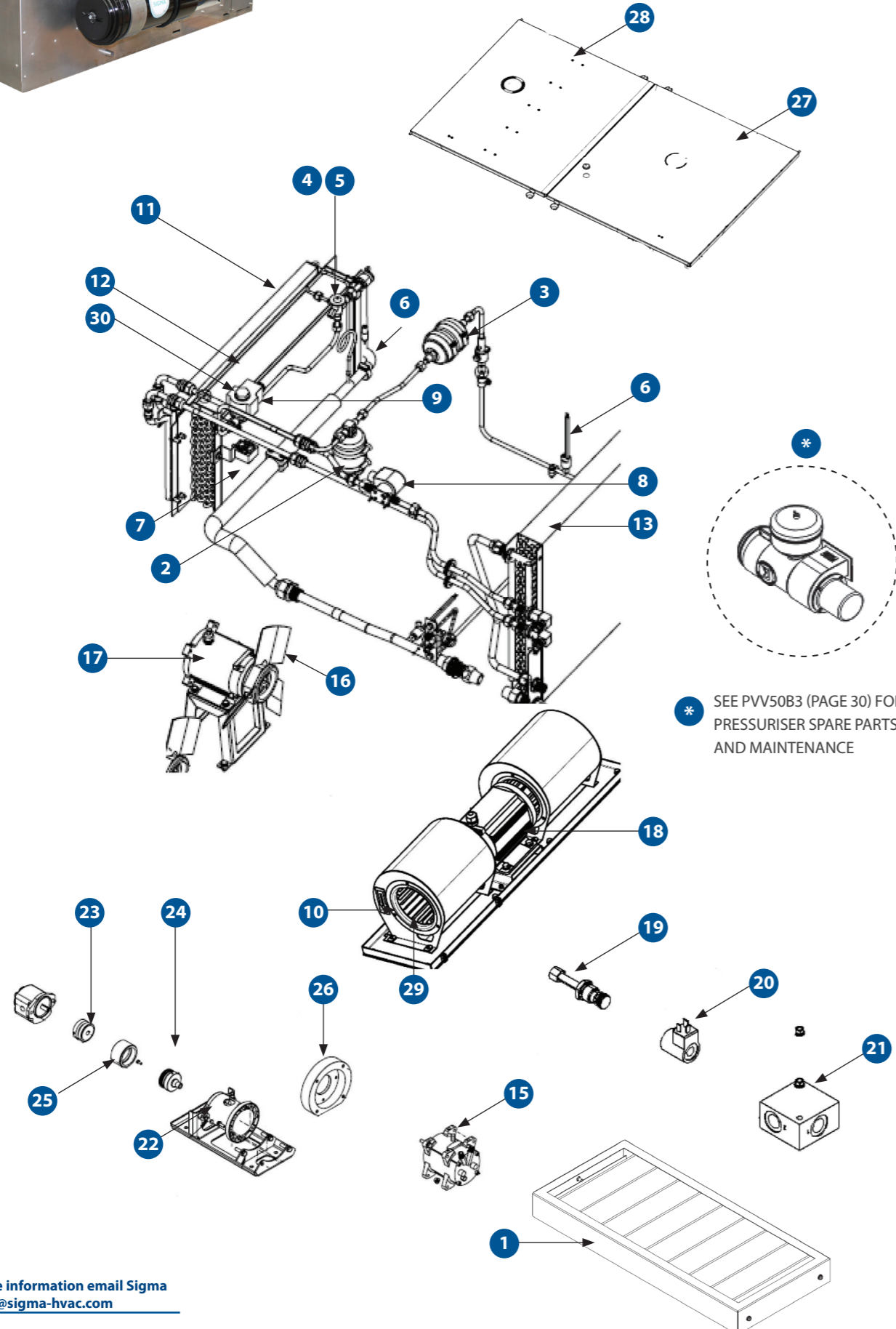
130 For more information email Sigma  
mid.aus@sigma-hvac.com



# TDR10 - REFRIGERATION

## TRUCK ROOFTOP HVAC UNIT

TDR10BX1 | TDR10BX2



## SPARE PARTS

PART NO.	DESCRIPTION	QTY
26	AS509746 ADAPTOR PLATE COMPRESSOR	1
27	AS3754045 COVER ASSEMBLY CONDENSER SECTION	1
28	AS3754044 COVER ASSEMBLY EVAPORATOR SECTION	1
29	AU410105 BLOWER 120D X 178W X 3/8 CW DI	2
30	AU668140 COIL SOLENOID 24VDC TYPE 1	1
AU523365	LP SWITCH 1/4" FF 205kPa	1
UC901	DIFFUSER 246MM X 104MM	4
UC269	ANTI VIBRATION MOUNT 1/2" -20UNF	4
AS3754102	HOSE - HYDRAULIC MOTOR DRAINAGE	1
AS3754103	HOSE - SOLENOID VALVE IN	1
AS3754104	HOSE - SOLENOID VALVE OUT	1
AS3754106	HOSE - HYDRAULIC COMP DISCHARGE	2
AS3754107	HOSE - HYDRAULIC COMP SUCTION	1
AS3754116	HOSE - HYDRAULIC MOTOR IN	1
UC504	DRAIN NOZZLE 13MM	4
AU517502	VALVE ACCESS 1/4" 1/4" & 3/8" OD SOLDER	1
AU517712	VALVE BALL 3/8" SOLDER	1
AU519074	ADAPTOR 134A 1/4" HIGH SIDE RED	1
AU519075	ADAPTOR 134A 1/4" LOW SIDE BLUE	1
AU519080	INSERT M O-RING TO MF #10	1
AU519099	INSERT M O-RING TO MF #12	1
AU851590	TOGGLE CLAMP RUBBER	4
AU853507	LEAF SPRING 105MM X 13MM	1
AU862211	SEAL RUBBER	7
AU230644	VALVE SERVICE 5/8" WITH ACCESS PORT	1
AU230C011	VALVE 1/2 TUBE #8 R134A DISCHARGE	1

\* SEE FVV50B3 (PAGE 30) FOR PRESSURISER SPARE PARTS AND MAINTENANCE

SPARE PARTS LIST CONTINUED NEXT PAGE

133 For more information email Sigma mid. aus@sigma-hvac.com

## SPECIFICATIONS

	METRIC	IMPERIAL
Cooling Capacity	8.5 kW	29002 BTU
Heating Capacity	10.0 kW	34120 BTU
Fan Speeds	3	3
Air Flow	350 l/s	742 CFM
Fresh Air	30 l/s	64 CFM
Power Supply	24 V	24 V
Current Draw	33A	33A
Refrigerant	R134a	R134a
Maximum Ambient Temperature	54°C	129°F
Weight (nominal)	220.0 Kg	484.0 lbs
Technical Manual Reference	SM478-3754	SM478-3754
Dimension (L X W X H)	1484mm X 833mm X 650mm	58.4in X 32.8in X 25.6in

## MAINTENANCE

MONTHLY / 400 HOURS	
AS3754056	RETURN AIR FILTER ASSEMBLY
ANNUAL / 4,800 HOURS	
AU531411	RECEIVER DRIER 3/8" 24UNF165MM HIGH
AU531138	DRIER 3/8" MF
3 YEARS / 14,400 HOURS	
AU521509	TX VALVE 2T 3/8"IN 1/2"OUT 1/4"EQ R134A
AU521508	TX ORIFICE 2T R22 #06
AU523655	HP SWITCH 1/4" FF 2415kPa
AU523365	LP SWITCH 1/4" FF 205kPa
UE016	THERMOSTAT DEICE STUD
UE057	VALVE SOLENOID 1/4" BSP 24VDC WATER
AU522021	SOLENOID VALVE 3/8" SOLDER NC
AU862211	SEAL RUBBER

Please contact SIGMA for more information including details on an overhaul scope and interval. Maintenance periods and scope are dependent on application and site conditions, and are to be used as a guide.

## COMPANION ITEMS

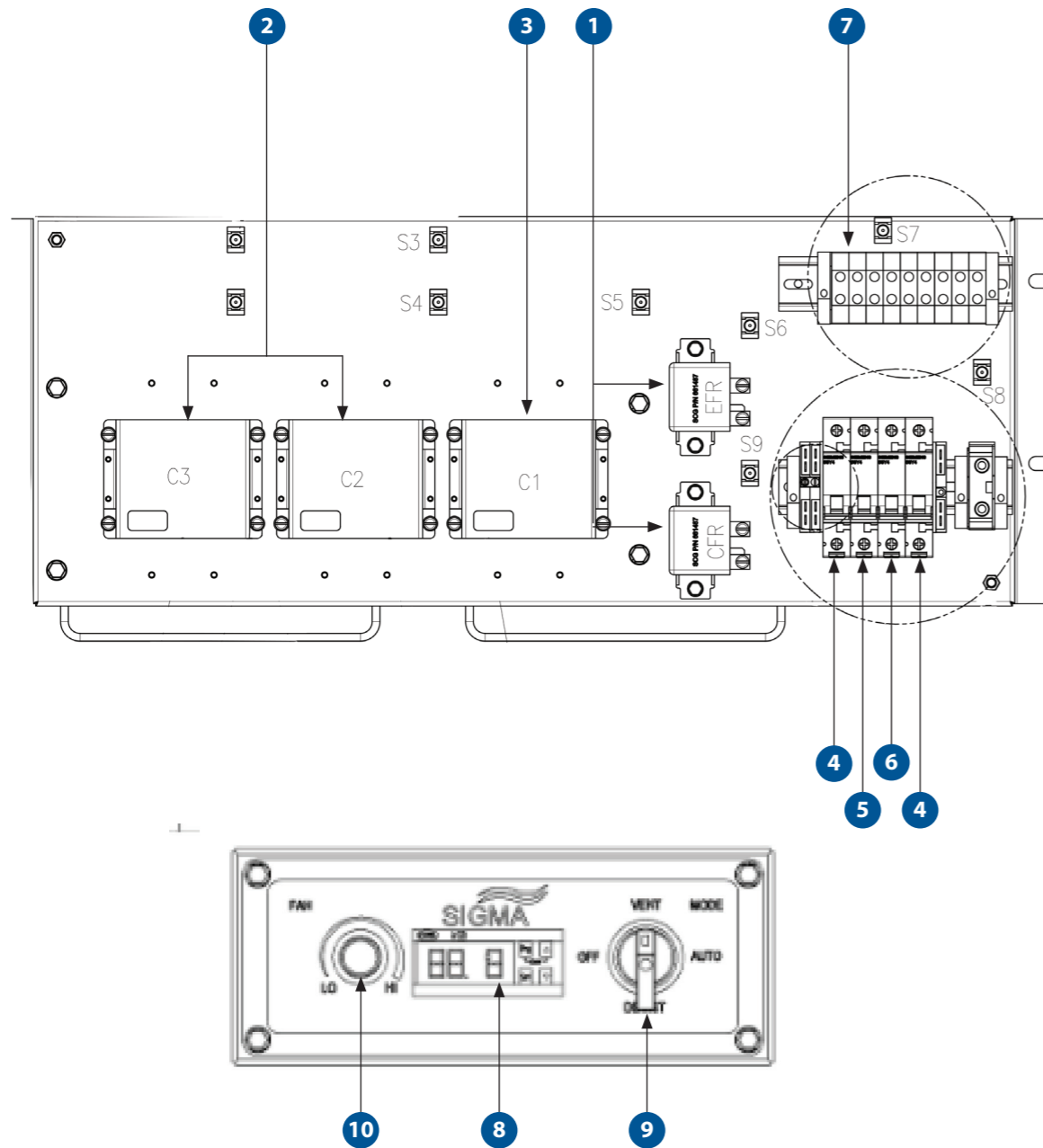
PART NO.	DESCRIPTION
H0017489	Hydraulic Compressor
H0017493	Hydraulic Compressor
AU270314E	Engine Driven Compressor
AU270318E	Engine Driven Compressor
KIT375401	Installation Kits



# TDR10 - ELECTRICAL

## TRUCK ROOFTOP HVAC UNIT

TDR10BX1 | TDR10BX2



## SPARE PARTS

PART NO.	DESCRIPTION	QTY
1	AU661487 RELAY 50A 24VDC 1 POLE	2
2	AU6761003 MOTOR CONTROL CONDENSER 24V 30A	2
3	AU6761004 MOTOR CONTROL EVAPORATOR 24V 30A	1
4	AU641092 CIRCUIT BREAKER 25A 1POLE	2
5	AU641091 CIRCUIT BREAKER 6A 1POLE	1
6	AU641090 CIRCUIT BREAKER 10A 1POLE	1
7	AU635521 TERM BLOCK 6MM <sup>2</sup> M4 SCREW	9
8	AU681960 THERMOSTAT DIGITAL 24V 2 STAGE	1
9	AU663117 ROTARY SWITCH 4 POSITION	1
10	AU6791057 CABLE JST- POTENTIOMETER 22K	1
	AU641070 CIRCUIT BREAKER 63A 1POLE	1
	AU681961 THERMOSTAT SENSOR PROBE NTC WITH LEAD	1
	AU635616 BUSBAR TERMINAL	1
	AU641172 BUSBAR 10MM <sup>2</sup>	1
	AU674014 DIODE 1000V 1A	2
	AU861071 SEAL FRESH AIR 153MM X 160MM TDR6	1
	AU861072 GASKET FRESH AIR FAN 160MM	2

\* SEE FVV50B3 (PAGE 30) FOR PRESSURISER PARTS AND MAINTENANCE

SPARE PARTS LIST CONTINUED ON PREVIOUS PAGE

## SPECIFICATIONS

	METRIC	IMPERIAL
Cooling Capacity	8.5 kW	29002 BTU
Heating Capacity	10.0 kW	34120 BTU
Fan Speeds	3	3
Air Flow	350 l/s	742 CFM
Fresh Air	30 l/s	64 CFM
Power Supply	24 V	24 V
Current Draw	33A	33A
Refrigerant	R134a	R134a
Maximum Ambient Temperature	54°C	129°F
Weight (nominal)	220.0 Kg	484.0 lbs
Technical Manual Reference	SM478-3754	SM478-3754
Dimension (L X W X H)	1484mm X 833mm X 650mm	58.4in X 32.8in X 25.6in

## MAINTENANCE

3 YEARS / 14,400 HOURS

**AU661487** RELAY 50A 24VDC 1 POLE

**AU681960** THERMOSTAT DIGITAL 24V 2 STAGE

Please contact SIGMA for more information including details on an overhaul scope and interval. Maintenance periods and scope are dependent on application and site conditions, and are to be used as a guide.

## COMPANION ITEMS

PART NO.	DESCRIPTION
H0017489	Hydraulic Compressor
H0017493	Hydraulic Compressor
KIT375401	Installation Kits
AU270314E	Engine Driven Compressor
AU270318E	Engine Driven Compressor