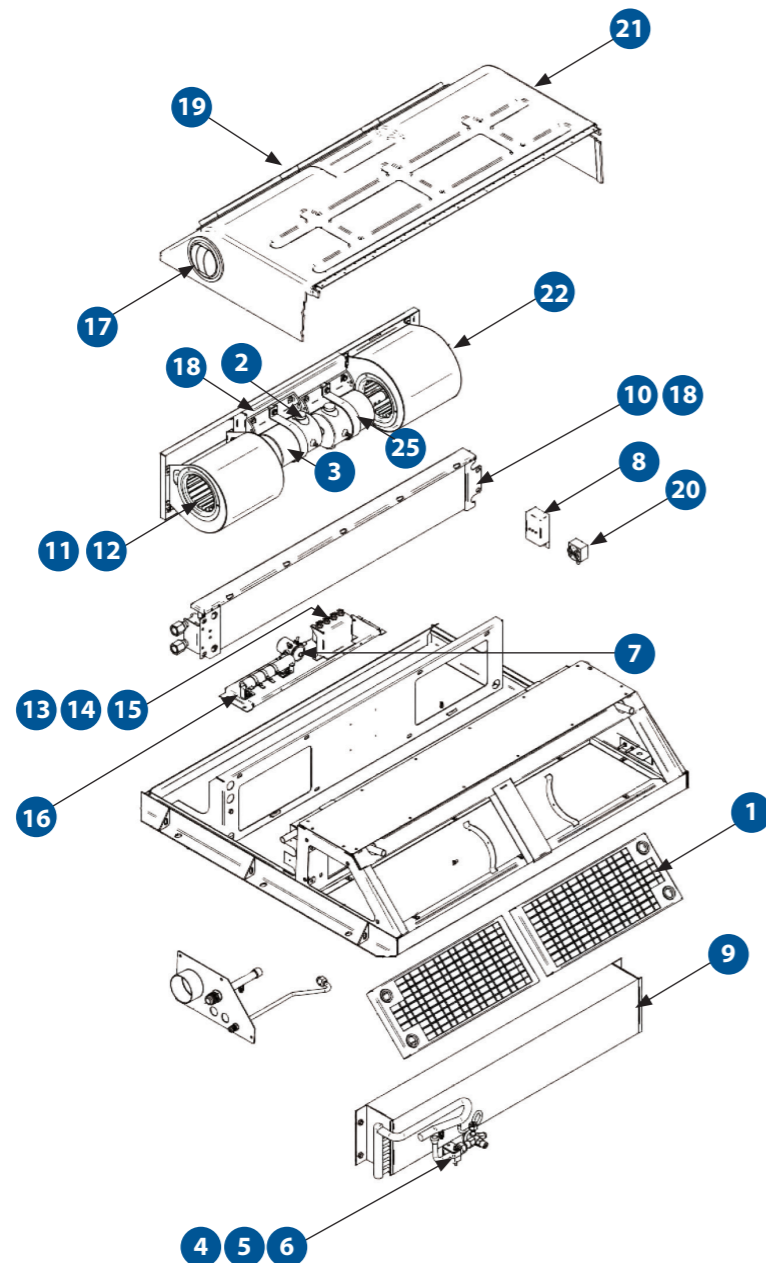


TFC8 CEILING EVAPORATOR

TFC8BX1 | TFC8BX2*

* With heating assembly



SPARE PARTS

PART NO.	DESCRIPTION	QTY
1	AS271535 RETURN AIR FILTER AS271535S RETURN AIR FILTER - DISPOSABLE OPTION	2
2	AU320622 BRUSH MOTOR 24VDC EACH HEAVY DUTY	4
3	H0039230 MOTOR UE026 WITH UPGRADED BRUSH	2
4	AU521509 TX VALVE 2T 3/8" IN 1/2" OUT 1/4" EQ R134A	1
5	AU521508 TX ORIFICE 2T R22 #06	1
6	AU523365 LP SWITCH 1/4" FF 205kPa	1
7	UE072 RELAY 24VDC 70A AUTOMOTIVE	1
8	AU681925 THERMOSTAT 12-24VDC WITH SENSOR + POT	1
9	AU120394 EVAPORATOR COIL 864MM X 166MM X 95MM 4RW TFC8	1
10	AU130009 HEATER COIL 864MM X 152MM X 32MM 2RW TFC8	1
11	AU410105 BLOWER 120D X 178W X 3/8 CW DI	2
12	AU410902 INLET RING 105MM	4
13	AU641065 CIRCUIT BREAKER 25A PUSH PULL	1
14	AU641067 CIRCUIT BREAKER 35A PUSH PULL	1
15	AU641C111 CIRCUIT BREAKER 5A PUSH PULL	2
16	AU692107 RESISTOR 2 OHM 100W 3 CLIPS ADJUSTABLE	1
17	AU821300 DIFFUSER ROUND 120MM POLYAMIDE	2
18	UC027 EVAPORATOR MOTOR MOUNT	2
19	UC901 DIFFUSER 246 X 104MM	3
20	UE016 THERMOSTAT DEICE STUD	1
21	S2715031 TFC8 EVAPORATOR COVER PLASTIC	1
22	AS198603 SUPPLY AIR BLOWER ASSEMBLY	2
	AS271576 HEATER ASSEMBLY (TFC8BX2)	1

SPARE PARTS LIST CONTINUED NEXT PAGE

SPECIFICATIONS

	METRIC	IMPERIAL
Cooling Capacity	8.0 kW	27296 BTU
Heating Capacity	10.0 kW	34120 BTU
Fan Speeds	3	3
Air Flow	325 l/s	689 CFM
Fresh Air	30 l/s	64 CFM
Power Supply	24V / 12V	24V / 12V
Current Draw	30 / 60A	30 / 6A0
Refrigerant	R134a	R134a
Maximum Ambient Temperature	54°C	129°F
Weight (nominal)	70.0 Kg	154.0 lbs
Technical Manual Reference	SM278-2715	SM278-2715
Dimension (L X W X H)	1100mm X 900mm X 221mm	43.3in X 35.4in X 8.7in

MAINTENANCE

MONTHLY / 500 HOURS

AS271535S	RETURN AIR FILTER
AS271535SS	RETURN AIR FILTER - DISPOSABLE OPTION

6 MONTHS / 2,400 HOURS

AU320622	BRUSH MOTOR 24VDC EACH HEAVY DUTY
----------	-----------------------------------

ANNUAL / 4,800 HOURS

H0039230	MOTOR UE026 WITH UPGRADED BRUSH
----------	---------------------------------

3 YEARS / 14,400 HOURS

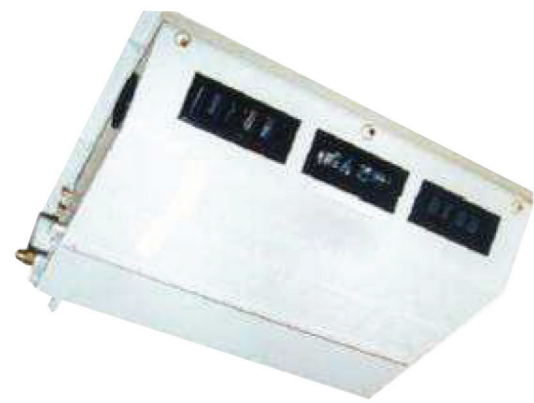
AU521509	TX VALVE 2T 3/8" IN 1/2" OUT 1/4" EQ R134a
AU521508	TX ORIFICE 2T R22 #06
AU523365	LP SWITCH 1/4" FF 205kPa
UE072	RELAY 24VDC 70A AUTOMOTIVE
UE057	VALVE SOLENOID 1/4" BSP 24VDC WATER
AU681925	THERMOSTAT 12-24VDC WITH SENSOR + POT

Please contact SIGMA for more information including details on an overhaul scope and interval. Maintenance periods and scope are dependent on application and site conditions, and are to be used as a guide.

COMPANION ITEMS

PART NO.	DESCRIPTION
TFC8BX2	Electric Condenser
EB9P4X	Pressuriser
H0017489	Hydraulic Compressor
H0017493	Hydraulic Compressor
AU110240	Radiator Condenser
AU1102401	Radiator Condenser
AU270306	Engine Driven Compressor
AU270307	Engine Driven Compressor
AU270314	Engine Driven Compressor
AU2701001	Engine Driven Compressor
AU531411	Receiver Drier
AU531422	Receiver Drier

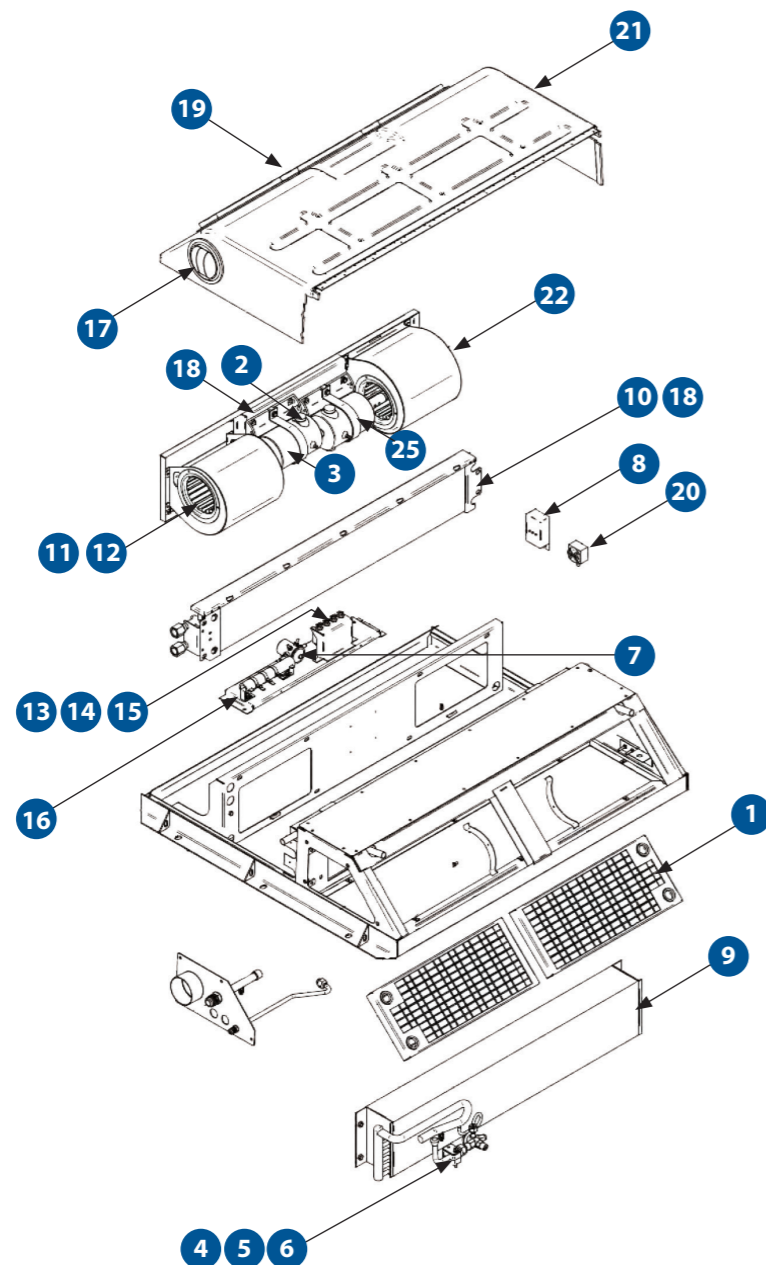
- DRAGLINE & SHOVEL
- DRILL
- EXCAVATOR
- DOZER
- TRUCK
- WHEEL LOADER
- CONSTRUCTION
- UNDERGROUND EQUIPMENT
- INDUSTRIAL
- SMELTERS
- RAIL SPECIAL VEHICLES



TFC8 CEILING EVAPORATOR

TFC8BX1 | TFC8BX2*

* With heating assembly



SPARE PARTS

PART NO.	DESCRIPTION	QTY
AU641601	CIRCUIT BREAKER 6.3-10A 3 POLE (TFC8BX2)	1
AU641612	CIRCUIT BREAKER 16A 3POLE (TFC8BX2)	1
UE699	CIRCUIT BREAKER 60A STUD TYP MANUAL (TFC8BX1)	1
AU651346	CONTACTOR 12A 24VDC 3 POLE 1NO 1NC (TFC8BX2)	2
AU663563	ROTARY SWITCH A B C D FAN	1
AU663569	ROTARY SWITCH MODE	1
AU681065	THERMOSTAT T3 80°C SPST AUTO (TFC8BX2)	1
AU691191	HEATER U SHAPE 2.0kW 240V 675MM SS FIN (TFC8BX2)	3
AU681926	POTENTIOMETER	1
UE057	VALVE SOLENOID 1/4" BSP 24VDC WATER	1
AU662410	SWITCH KEYED 20A	1
AU517502	VALVE ACCESS 1/4" 1/4" & 3/8" OD SOLDER	1
AU635302	TERM BLK SIE 3 POLE 2 5MMSQ (TFC8BX2)	3
AU636033	PLUG H3322-8/100 (TFC8BX2)	1
AU636039	RECEIPT CIRCUIT (TFC8BX2)	1
AU636125	BULLET SUPERGRIP	2
AU636127	BULLET SUPERGRIP	2
AU636255	TERM BLK BRIDGE SIE 4WAY 2 5MM (TFC8BX2)	1
AU853505	LEAF SPRING 145MM X 25 MM	2
AU872135	SHAFT EXTENSION 1/2" F X 1/2" M	2
AU935432	FLAT NEOPRENE EXTRUSION	1
S5006029	MOTOR MOUNT CLAMP 97MM	2
UC020	HOSE CLEAR PVC 12 5MM ID	10
UC031	FASTENER ASSEMBLY 1/4 TURN - STUD & RECEIPT	3
UC096	FITTING P3 5/8 STR BRB X 1/4 MBSPT (TFC8BX1)	2
UC504	DRAIN NOZZLE 13MM	4

SPARE PARTS LIST CONTINUED ON PREVIOUS PAGE

SPECIFICATIONS

	METRIC	IMPERIAL
Cooling Capacity	8.0 kW	27296 BTU
Heating Capacity	10.0 kW	34120 BTU
Fan Speeds	3	3
Air Flow	325 l/s	689 CFM
Fresh Air	30 l/s	64 CFM
Power Supply	24V / 12V	24V / 12V
Current Draw	30 / 60A	30 / 6A0
Refrigerant	R134a	R134a
Maximum Ambient Temperature	54°C	129°F
Weight (nominal)	70.0 Kg	154.0 lbs
Technical Manual Reference	SM278-2715	SM278-2715
Dimension (L X W X H)	1100mm X 900mm X 221mm	43.3in X 35.4in X 8.7in

MAINTENANCE

MONTHLY / 500 HOURS	
AS271535S	RETURN AIR FILTER
AS271535SS	RETURN AIR FILTER - DISPOSABLE OPTION
6 MONTHS / 2,400 HOURS	
AU320622	BRUSH MOTOR 24VDC EACH HEAVY DUTY
ANNUAL / 4,800 HOURS	
H0039230	MOTOR 0.14W 24VDC D/S
3 YEARS / 14,400 HOURS	
AU521509	TX VALVE 2T 3/8" IN 1/2" OUT 1/4" EQ R134a
AU521508	TX ORIFICE 2T R22 #06
AU523365	LP SWITCH 1/4" FF 205kPa
UE072	RELAY 24VDC 70A AUTOMOTIVE
UE057	VALVE SOLENOID 1/4" BSP 24VDC WATER
AU681925	THERMOSTAT 12-24VDC WITH SENSOR + POT

Please contact SIGMA for more information including details on an overhaul scope and interval. Maintenance periods and scope are dependent on application and site conditions, and are to be used as a guide.

COMPANION ITEMS

PART NO.	DESCRIPTION
TFC8BX2	Electric Condenser
EB9P4X	Pressuriser
H0017489	Hydraulic Compressor
H0017493	Hydraulic Compressor
AU110240	Radiator Condenser
AU1102401	Radiator Condenser
AU270306	Engine Driven Compressor
AU270307	Engine Driven Compressor
AU270314	Engine Driven Compressor
AU2701001	Engine Driven Compressor
AU531411	Receiver Drier
AU531422	Receiver Drier

- DRAGLINE & SHOVEL
- DRILL
- EXCAVATOR
- DOZER
- TRUCK
- WHEEL LOADER
- CONSTRUCTION
- UNDERGROUND EQUIPMENT
- INDUSTRIAL
- SMELTERS
- RAIL SPECIAL VEHICLES

OVERVIEW | PRESSURISERS | E SERIES | H SERIES | M SERIES | T SERIES | PILOT CONTROL BOXES | SERVICEABLE PARTS | UNDERSTANDING HVAC | POLICIES