



EB9P PRESSURISER

EB9P2* | EB9P4

* HVAC obsolete, spares support only

SPARE PARTS

PART NO.	DESCRIPTION	QTY
1	AU460706 FILTER - STANDARD AU460080 FILTER - HIGH EFFICIENCY	1 1
* Note: Sites which have both EB9P4 and EB9P4X can use KNHV80005 to suit both unit		
2	AU410337 BLOWER 120D X 89W X 5/8 CCW SI	1
3	UE327 MOTOR 70W 12VDC PANCAKE (EB9P2) UE325 MOTOR 70W 24VDC PANCAKE (EB9P4)	1 1
4	AU460725 FILTER PRE-CLEANER	1
5	AU460709 FILTER END CAP (SUPPLIED WITH WINGNUT)	1
6	AU460721 FILTER WING NUT	1
7	AU870001 MOUNTING BAND AIR CLEANER 6.5"	1
	AU460707 FILTER END COVER (PREVIOUS DESIGN)	1
	AU460708 FILTER CAP RUB BAFFLE (PREVIOUS DESIGN)	1
	AU460764 FILTER CLAMP ASSEMBLY 6" (PREVIOUS DESIGN)	1

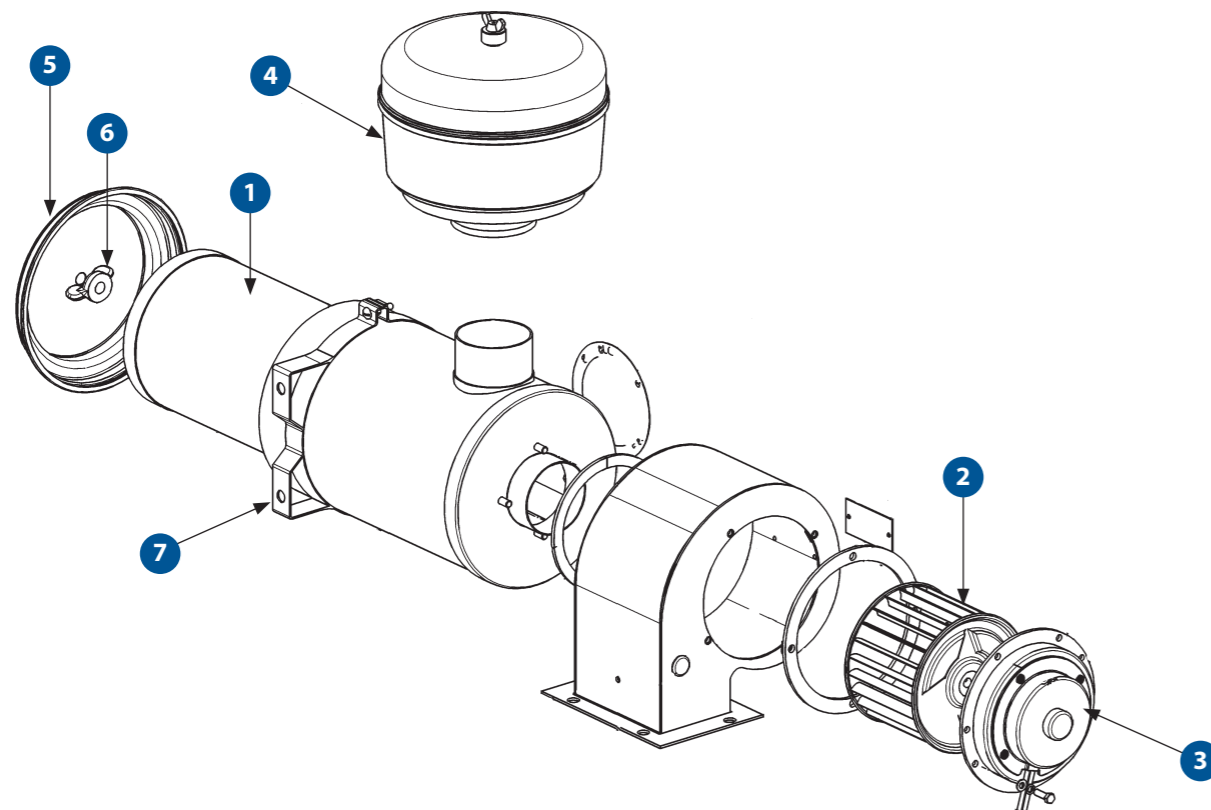
SPECIFICATIONS

	METRIC	IMPERIAL
Fan Speeds	1	1
Fresh Air	40 l/s	40 CFM
Power Supply	12V / 24V	12V / 24V
Current Draw	3A / 1.5 A	3A / 1.5 A
Weight (nominal)	8.0 Kg	17.6 lbs
Technical Manual Reference	SM496-5065	SM496-5065
Dimension L X W X H	462mm X 364mm X 192mm	18.2in X 14.3in X 7.6in

MAINTENANCE

MONTHLY / 300 HOURS	
AU460706	FILTER - STANDARD
AU460080	FILTER - HIGH EFFICIENCY
KNHV80005*	FILTER KIT
ANNUAL / 3,600 HOURS	
UE327 (EB9P2)	MOTOR 70W 12VDC PANCAKE
UE325 (EB9P4)	MOTOR 70W 24VDC PANCAKE
3 YEARS / 10,800 HOURS	
AU410337	BLOWER 120D X 89W X 5/8 CCW SI
AU460725	FILTER PRE-CLEANER

Please contact SIGMA for more information including details on an overhaul scope and interval. Maintenance periods and scope are dependent on application and site conditions, and are to be used as a guide.



- DRAGLINE & SHOVEL
- DRILL
- EXCAVATOR
- DOZER
- TRUCK
- WHEEL LOADER
- CONSTRUCTION
- UNDERGROUND EQUIPMENT
- INDUSTRIAL
- SMELTERS
- RAIL SPECIAL VEHICLES