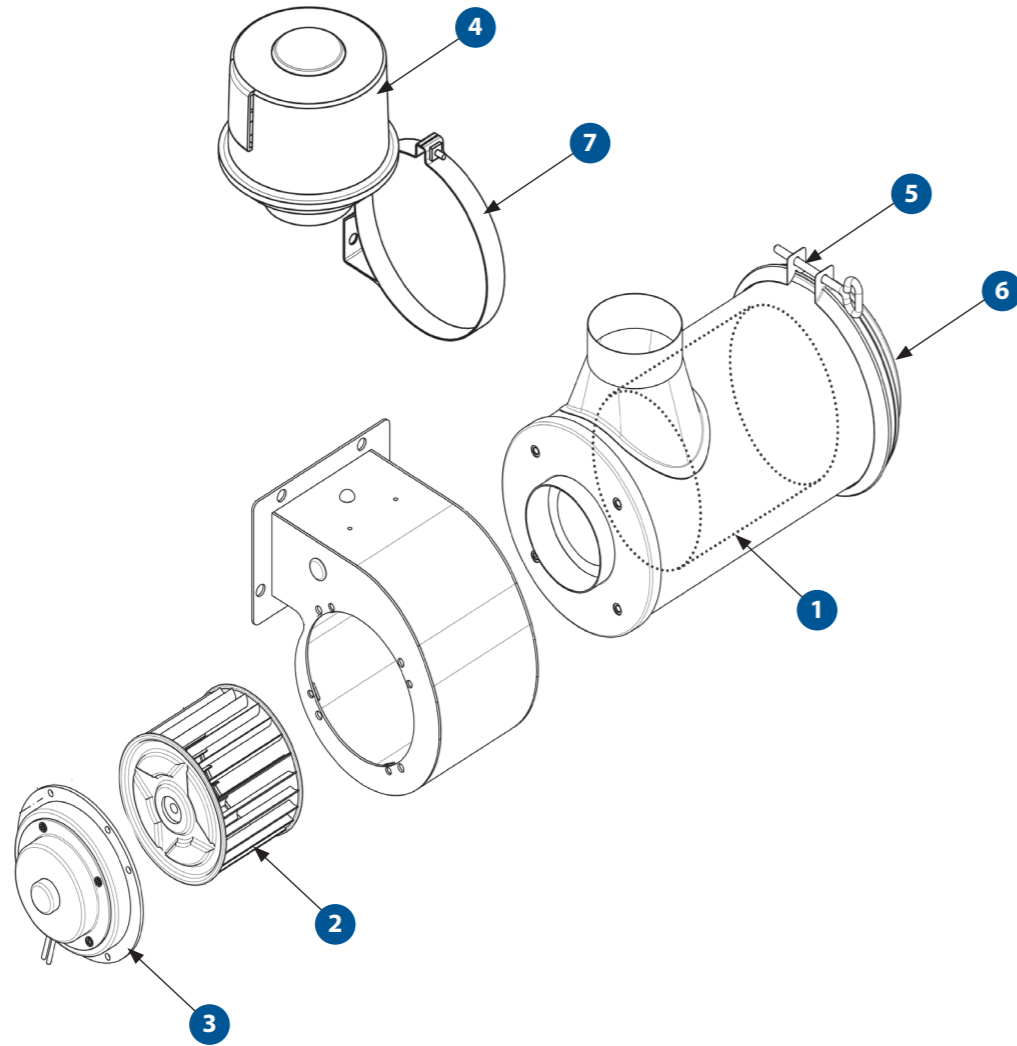




EB9P4X

PRESSURISER

EB9P4X | EB9P4XL



SPARE PARTS

PART NO.	DESCRIPTION	QTY
1	AU460083 FILTER CARTRIDGE ENDURANCE (EB9P4X) AU460082 FILTER CARTRIDGE ENDURANCE (EB9P4XL)	1 1
* Note: Sites which have both EB9P4 and EB9P4X can use KNHV80005 to suit both unit		
2	AU410337 BLOWER 120D X 89W X 5/8 CCW SI	1
3	UE325 MOTOR 70W 24VDC PANCAKE	1
4	AU460963 FILTER PRE-CLEANER	1
5	H0056158 CLAMP ASSEMBLY 168MM ID	1
6	H0056157 COVER ASSEMBLY	1
7	AU870001 MOUNTING BAND AIR CLEANER 6.5"	1

SPECIFICATIONS

	METRIC	IMPERIAL
Fan Speeds	1	1
Fresh Air	40 l/s	40 CFM
Power Supply	24V	24V
Current Draw	3A	3A
Weight (nominal)	8.0 Kg	17.6 lbs
Technical Manual Reference	SM496-5065	SM496-5065
Dimension L X W X H	462mm X 364mm X 192mm	18.2in X 14.3in X 7.6in

MAINTENANCE

MONTHLY / 300 HOURS	
AU460083	FILTER CARTRIDGE ENDURANCE (EB9P4X)
AU460082	FILTER CARTRIDGE ENDURANCE (EB9P4XL)
KNHV80005*	FILTER KIT
ANNUAL / 3600 HOURS	
UE325	MOTOR 70W 24VDC PANCAKE
3 YEARS / 10,800 HOURS	
AU410337	BLOWER 120D X 89W X 5/8 CCW SI
AU460963	FILTER PRE-CLEANER

Please contact SIGMA for more information including details on an overhaul scope and interval. Maintenance periods and scope are dependent on application and site conditions, and are to be used as a guide.

- DRAGLINE & SHOVEL
- DRILL
- EXCAVATOR
- DOZER
- TRUCK
- WHEEL LOADER
- CONSTRUCTION
- UNDERGROUND EQUIPMENT
- INDUSTRIAL
- SMELTERS
- RAIL SPECIAL VEHICLES