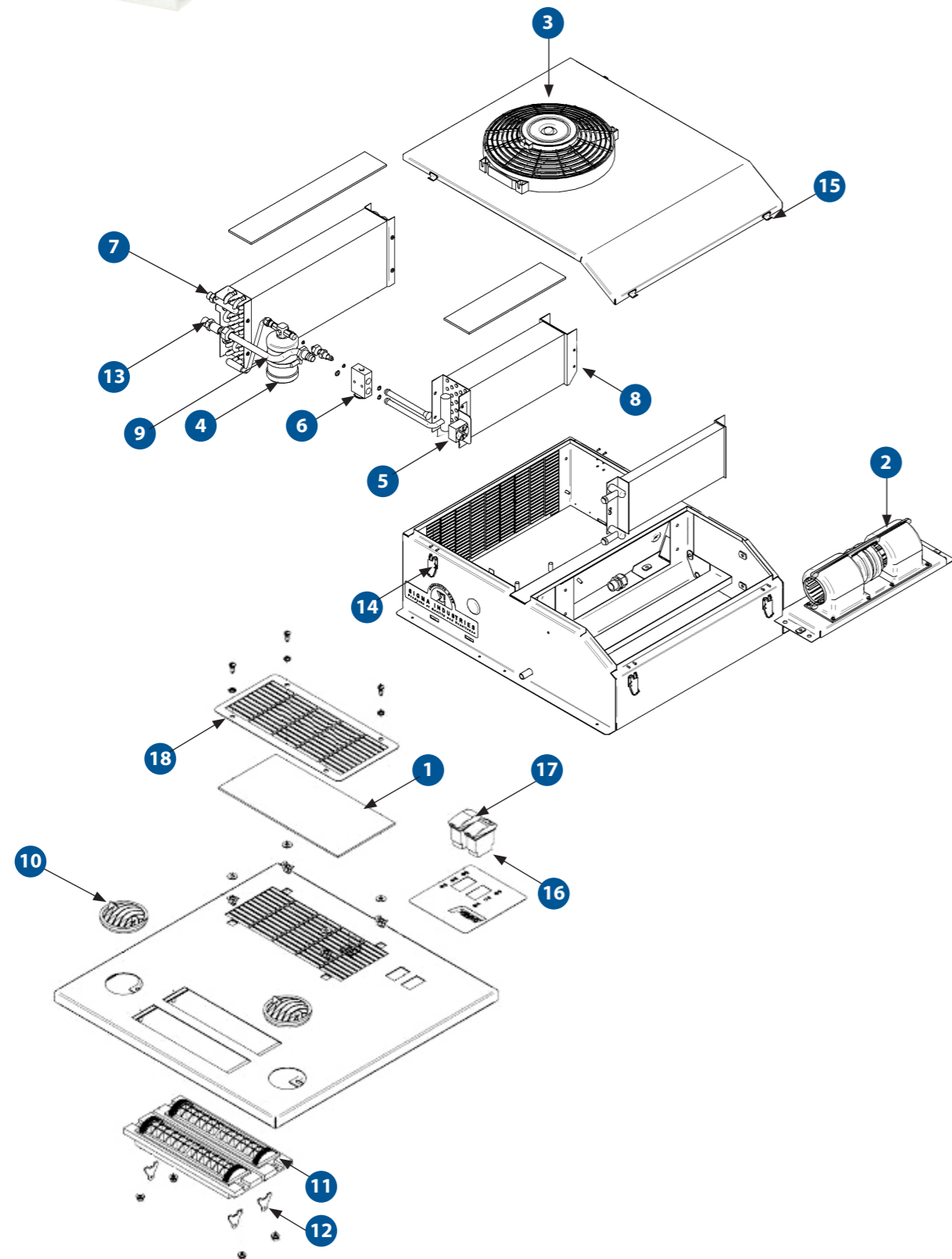
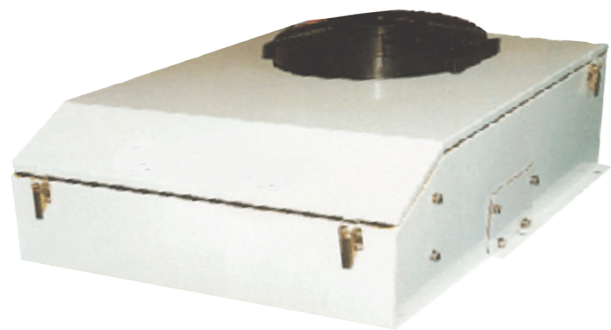


EC12

ROOFTOP PACKAGED HVAC UNIT

EC122 | EC124



SPARE PARTS

PART NO.	DESCRIPTION	QTY
1	S2501180 RETURN AIR FILTER MEDIA	1
2	AU400035 FAN DECK 12V 3SPD (EC122) AU400034 FAN DECK 24V 3SPD (EC124)	1
3	AU420052 FAN AXIAL ASSEMBLY 330MM 12VDC (EC122) AU420053 FAN AXIAL ASSEMBLY 330MM 24VDC (EC124)	1
4	AU531422 RECEIVER DRIER 3/8" MIOR 160MM HIGH	1
5	UE016 THERMOSTAT DEICE STUD	1
6	H0092214 TX VALVE	1
7	AU110415 CONDENSER COIL 485MM X 203MM X 79MM 5RW EDR4	1
8	AU120465 EVAPORATOR COIL 345X152X79 4RW EC9 EC124	1
9	AS250148 SUCTION LINE TX VALVE TO BULKHEAD FITTING	1
10	AU821708 LOUVRE ROUND 3" HOLE	2
11	S2501107 DIFFUSER 252MM X 62MM	2
12	S2501074 DIFFUSER INTERFACE	4
13	AU512C067 BULKHEAD FITTING O-RING 5/8"	1
14	UC048 LATCH TOGGLE OVER-CENTRE	4
15	UC047 KEEPER PLATE ZP	4
16	AU662968 SWITCH ROCKER IP68 24V 15A GRN LED (A/C) AU662970 SWITCH ROCKER IP68 12V 20A GRN LED (A/C)	1
17	AU662969 SWITCH ROCKER IP68 24V 15A FAN SPEED AU662971 SWITCH ROCKER IP68 12V 20A FAN SPEED	1
18	S25011725 RETURN AIR FILTER COVER	1
	AU661482 RELAY 30A 12VDC 5 PIN	1
	AU661483 RELAY 20A 24VDC 5 PIN	1
	UE064 DPC 1/4" MF HP 2206kPa LP 196kPa	1
	UC020 HOSE CLEAR PVC 12 5MM ID	5
	AS250147 LIQUID LINE RECEIVER TO TX VALVE	1
	S2501207 GRILLE 344X100MM	1
	UC504 DRAIN NOZZLE 13MM	2
	AU643213 FUSE BLADE MINI 15A AUTO	1
	AU643116 FUSE HOLDER MINI CRIMP 30A	1
	AU643100 FUSE BLADE MINI 25A AUTO	1

SPECIFICATIONS

	METRIC	IMPERIAL
Cooling Capacity	4.0 kW	13648 BTU
Heating Capacity	3.5 kW	11942 BTU
Air Flow	110 l/s	233 CFM
Power Supply	24V / 12V	24V / 12V
Current Draw	12.5 A / 25 A	12.5 A / 25 A
Refrigerant	R134a	R134a
Maximum Ambient Temperature	46°C	115°F
Weight (nominal)	35.0 Kg	77.0 lbs
Technical Manual Reference	SM266-2494	SM266-2494
Dimension L X W X H	760mm X 600mm X 330mm	29.9in X 23.6in X 13in

MAINTENANCE

MONTHLY / 300 HOURS

S2501180 RETURN AIR FILTER MEDIA

ANNUAL / 3,600 HOURS

AU400035 FAN DECK 12V 3SPD
 AU400034 FAN DECK 24V 3SPD
 AU420052 FAN AXIAL ASSEMBLY 330MM 12VDC
 AU420053 FAN AXIAL ASSEMBLY 330MM 24VDC
 AU531422 RECEIVER DRIER 3/8" MIOR 160MM HIGH

3 YEARS / 10,800 HOURS

UE016 THERMOSTAT DEICE STUD
 AU661482 RELAY 30A 12VDC 5 PIN
 AU661483 RELAY 20A 24VDC 5 PIN
 UE064 DPC 1/4" MF HP 2206kPa LP 196kPa
 H0092214 TX VALVE

Please contact SIGMA for more information including details on an overhaul scope and interval.
 Maintenance periods and scope are dependent on application and site conditions, and are to be used as a guide.

COMPANION ITEMS

PART NO.	DESCRIPTION
EB9P4X	Pressuriser
HDC150	Hydraulic Compressor
AU2961001	Electric Compressor
AU270306	Engine Driven Compressor
AU270307	Engine Driven Compressor
AU2790311	Engine Driven Compressor
AU270312	Engine Driven Compressor
KIT25011	Installation Kits