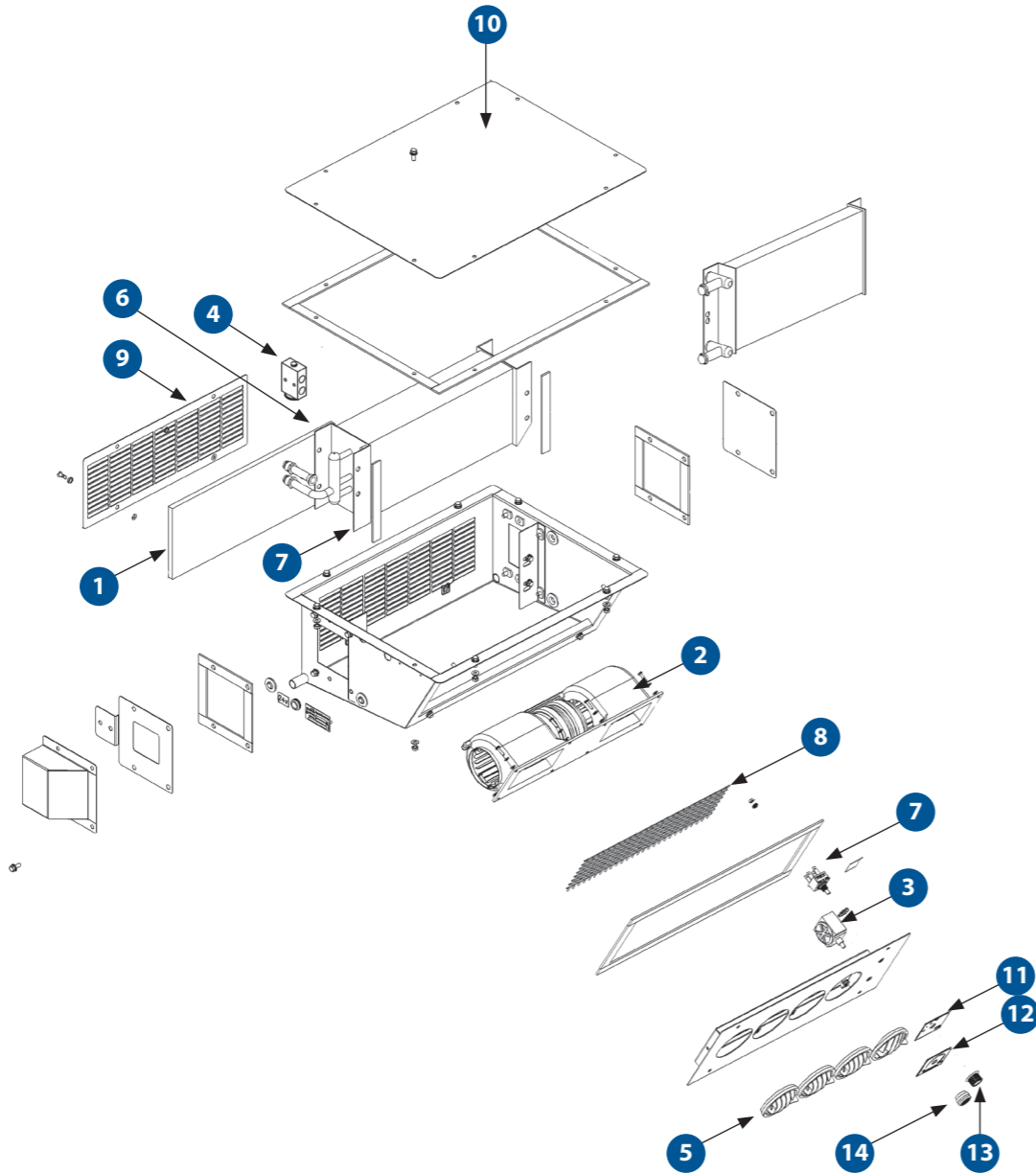




EC12H

CEILING MOUNT EVAPORATOR

EC12H2 | EC12H4 | EC12H4SS



SPARE PARTS

PART NO.	DESCRIPTION	QTY
1 S2501182S	EVAPORATOR FILTER MEDIA 385MM X 145MM	1
2 AU400035	FAN DECK 12V 3SPD (EC12H2)	1
AU400034	FAN DECK 24V 3SPD (EC12H4)	1
3 UE016	THERMOSTAT DEICE STUD	1
4 H0092214	TX VALVE BLK	1
5 AU821708	LOUVRE ROUND 3" HOLE	4
6 AU120506	EVAPORATOR COIL 345MM X 152MM X 79MM (EC12H4SS)	1
AU120480	EVAPORATOR COIL 345MM X 152MM X 79MM (EC12H2/EC12H4)	1
7 UE335	ROTARY SWITCH 3-SPEED C/W NUT	1
8 S2501207	GRILLE 344MM X 100MM	1
9 S2501026	FILTER COVER	1
10 S2501022	LID	1
11 AU854350	LABEL FAN SWITCH	1
12 AU854351	LABEL THERMOSTAT	1
13 UC451	KNOB BLACK PLASTIC	1
14 UC022	KNOB SNOWFLAKE	1
UC504	DRAIN NOZZLE 13MM	2
AU552403	O-RING 134A SIZE 13/32" #8	2
AU643213	FUSE BLADE MINI 15A AUTO	1

SPECIFICATIONS

	METRIC	IMPERIAL
Cooling Capacity	4.0 kW	13648 BTU
Heating Capacity (Optional)	3.5 kW	11942 BTU
Air Flow	110 l/s	233 CFM
Fresh Air	30 l/s	64CFM
Power Supply	24V / 12V	24V / 12V
Current Draw	5 A / 10 A	5 A / 10 A
Refrigerant	R134a	R134a
Maximum Ambient Temperature	46°C	115°F
Weight (nominal)	10.0 Kg	22.0 lbs
Technical Manual Reference	SM260-2494	SM260-2494
Dimension L X W X H	513mm X 415mm X 180mm	20.2in X 16.3in X 7.1in

MAINTENANCE

MONTHLY / 300 HOURS	
S2501182S	R/A FILTER MEDIA
ANNUAL / 3,600 HOURS	
AU400035	FAN DECK 12V 3SPD
AU400034	FAN DECK 24V 3SPD
3 YEARS / 10,800 HOURS	
UE016	THERMOSTAT DEICE STUD
H0092214	TX VALVE BLK

Please contact SIGMA for more information including details on an overhaul scope and interval. Maintenance periods and scope are dependent on application and site conditions, and are to be used as a guide.

COMPANION ITEMS

PART NO.	DESCRIPTION
EC12C4	Electric Condenser
EB9P4X	Pressuriser
HDC150	Hydraulic Compressor
AU2961001	Electric Compressor
AU110316	Radiator Condenser
AU270306	Engine Driven Compressor
AU270307	Engine Driven Compressor
AU2790311	Engine Driven Compressor
AU270312	Engine Driven Compressor
KIT25014	Heater Kit

- DRAGLINE & SHOVEL
- DRILL
- EXCAVATOR
- DOZER
- TRUCK
- WHEEL LOADER
- CONSTRUCTION
- UNDERGROUND EQUIPMENT
- INDUSTRIAL
- SMELTERS
- RAIL SPECIAL VEHICLES