

2MP/8MP BULLET CAMERA

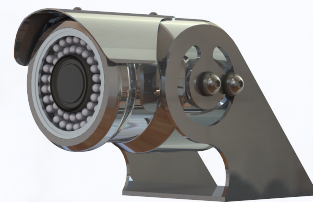
Stainless Steel 316L 2MP/8MP Bullet Camera



GC-BN SERIES

Key Features

- **AISI 316L Electro Polished Stainless Steel**
- **2MP / 8MP H.265 Network Camera**
- **IR LED Upto 30M**
- **Various Lens Options (Fixed / MVF)**
- **Shock and Vibration Tested**
- **Tempered Glass**
- **12VDC / POE**
- **IP66/67**
- **-40°C~60°C**



GC-BN SERIES



PRODUCT SPECIFICATIONS

GC-BN Series

Camera

- **Image sensor**
1/2.8" Sony Exmor CMOS
- **Scanning mode**
Progressive scan
- **Lens**
2M Fixed [GC-2BN]
: Fixed 2.8mm±5%, F2.0 2
M MVF [GC-M2BN] : MVF
2.7-12mm±5%, F1.6
8M MVF [GC-M8BN]
: MVF 3.2-10.5mm±5%, F1.6
- **Digital zoom**
8x
- **Angle of view**
2M Fixed [GC-2BN]
-. H: 113.7° / V: 61.5° 2M
MVF [GC-M2BN]
-. H: 108.8°-32.3° / V: 57.2°-18.2°
8M MVF [GC-M8BN]
-. H: 108.1°-30.3° / V: 56.3°-17.1°
- **Shutter speed**
Automatic / Manual
1/30,000sec-1/30sec
- **Day/night**
ICR(auto/day/night)
- **Min. illumination**
Color: 0.03Lux,
B/W: 0Lux(IR LED on)
- **Camera setting**
DOL HDR, DNR, BLC, HLC,
White balance, Exposure control,
Mirror, Flip, Privacy masking,
Corridor format, LDC, OSD
- **Analytics**
Tamper, Video motion detection

Video

- **Compression**
H.265(Main profile), H.264(High,
Main, Base line profile), MJPEG
- **Resolution**
2M [GC-2BN / GC-M2BN] 1920x
1080, 1280x720, 1024x576, 768x
432, 704x392, 640x360, 384x216
8M [GC-M8BN]
3840x2160, 1920x1080, 1280x720,
1024x576, 768x432, 704x392,
640x360, 384x216
- **Frame rate**
2MP : Max. 30(25)fps@1920x1080
8MP : Max. 30(25)fps@3840x2160
- **Streaming**
Simultaneously H.265, H.264 and
MJPEG (Triple streaming)
Independent Frame Rate and
Bandwidth Control, VBR/CBR

Network

- **Security**
Multi User Authority, IP Filtering,
HTTPS
- **Protocol**
TCP/IP, UDP, IPv4/v6, HTTP,
HTTPS, FTP, UPnP, RTP, RTSP,
RTCP, DHCP, ARP, Zeroconf
- **API**
Open API, ONVIF profile S, T

MAIN CERTS

- CE
- FCC
- KC
- IP66/67



General

- **Connectors**

Ethernet RJ-45

DC jack

- **Power supply**

12VDC / POE

- **Power consumption**

250mA(12W)@PoE, 1A (12W)

@12VDC

- **Operating humidity**

0-90% RH(Non-condensing)

- **Operating temperature**

-40°C - +60°C

- **Ingress protection**

IP66/68

- **Dimension**

109(W)x132.5(H)x124(D)mm

- **Weight**

Approx. 2.5Kg

- **Certification**

CE, FCC, KC

OPTIONAL ACCS

AISI 316L JB

